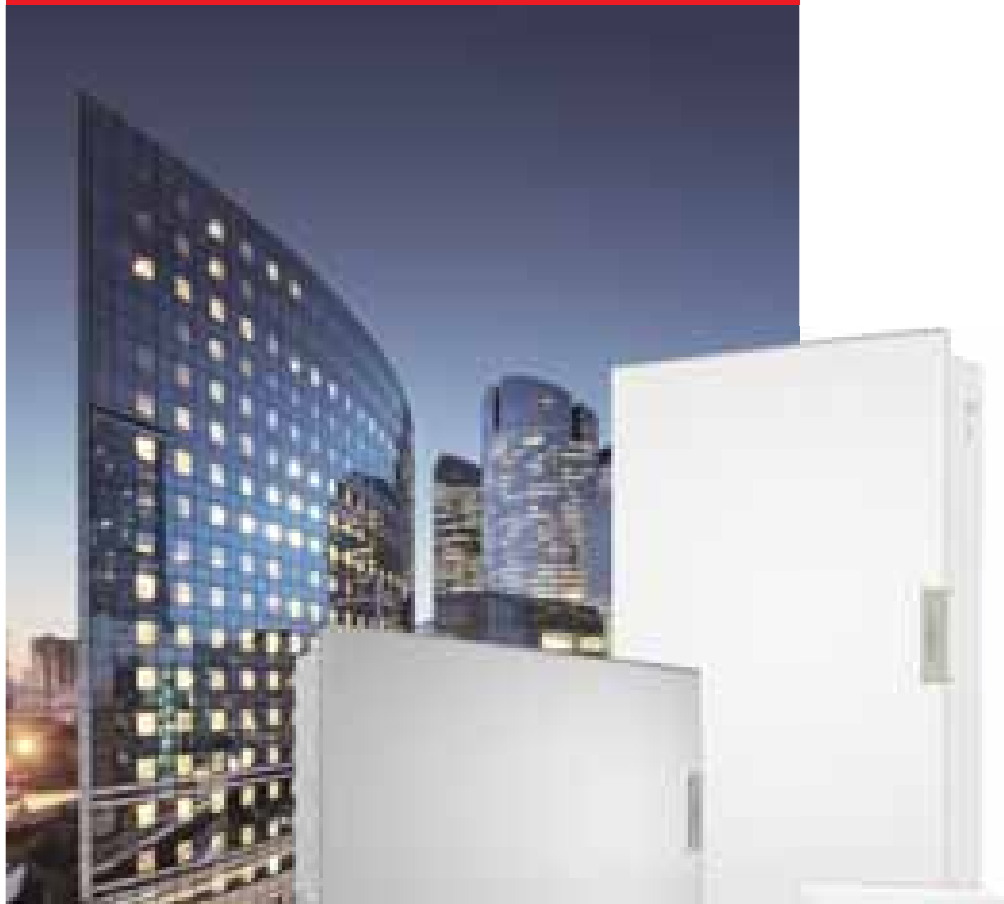


Building Circuit Protection



PRICE LIST
w.e.f. 14th February, 2014



- MCB ▪ RCCB ▪ RCBO ▪ Isolator ▪ MCB Changeover
- Indicator Light ▪ ACCL ▪ Metalica Distribution Board ▪ Utility Distribution Board
- Special Purpose Distribution Board ▪ Designer Distribution Board

MCB



'B' Series SP MCB

(In accordance with IS/IEC 60898-1) 240V, 50Hz, 10kA Suitable for lighting and other domestic loads

Rating	SP Cat. No.	MRP `
6-32A	DHMCCSPF006-032	195/-
40A	DHMCCSPF040	415/-



'C' Series MCB

(In accordance with IS/IEC 60898-1) 240/415V, 50Hz, 10kA Suitable for Motor and other Inductive loads

Rating	SP Cat. No.	MRP `	SPN Cat. No.	MRP `	DP Cat. No.	MRP `
0.5-5A	DHMCCSPF0x5-005	290/-	DHMCCSNF0x5-005	660/-	DHMCCDPF0x5-005	770/-
6-32A	DHMCCSPF006-032	215/-	DHMCCSNF006-032	605/-	DHMCCDPF006-032	620/-
40A	DHMCCSPF040	425/-	DHMCCSNF040	860/-	DHMCCDPF040	915/-
50A	DHMCCSPF050	475/-	DHMCCSNF050	930/-	DHMCCDPF050	1,035/-
63A	DHMCCSPF063	475/-	DHMCCSNF063	930/-	DHMCCDPF063	1,035/-
Rating	TP Cat. No.	MRP `	TPN Cat. No.	MRP `	FP Cat. No.	MRP `
0.5-5A	DHMCCTPF0x5-005	1,010/-	DHMCCTNF0x5-005	1,410/-	DHMCCFPF0x5-005	1,525/-
6-32A	DHMCCTPF006-032	970/-	DHMCCTNF006-032	1,245/-	DHMCCFPF006-032	1,335/-
40A	DHMCCTPF040	1,420/-	DHMCCTNF040	1,785/-	DHMCCFPF040	1,815/-
50A	DHMCCTPF050	1,500/-	DHMCCTNF050	1,860/-	DHMCCFPF050	1,925/-
63A	DHMCCTPF063	1,500/-	DHMCCTNF063	1,860/-	DHMCCFPF063	1,925/-



'D' Series MCB

(In accordance with IEC 60898-1) 240/415V, 50Hz Suitable for high inrush current loads.

Rating	SP Cat. No.	MRP `	DP Cat. No.	MRP `
0.5-5A	DHMCDSPF0x5-005	305/-	DHMCDDPF0x5-005	825/-
6-32A	DHMCDSPF006-032	265/-	DHMCDDPF006-032	675/-
40A	DHMCDSPF040	475/-	DHMCDDPF040	1,015/-
50A	DHMCDSPF050	485/-	DHMCDDPF050	1,065/-
63A	DHMCDSPF063	485/-	DHMCDDPF063	1,065/-
Rating	TP Cat. No.	MRP `	FP Cat. No.	MRP `
0.5-5A	DHMCCTPF0x5-005	1,250/-	DHMCDFPF0x5-005	1,535/-
6-32A	DHMCCTPF006-032	1,030/-	DHMCDFPF006-032	1,375/-
40A	DHMCCTPF040	1,500/-	DHMCDFPF040	1,890/-
50A	DHMCCTPF050	1,600/-	DHMCDFPF050	2,050/-
63A	DHMCCTPF063	1,600/-	DHMCDFPF063	2,050/-

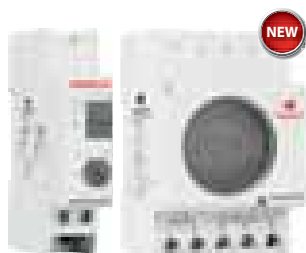


Higher Rating SP MCB (80 to 125A) 'C' Series,

(In accordance with IS/IEC 60947-2) 240/415V, 50 Hz, 10kA

Rating	SP Cat. No.	MRP `	DP Cat. No.	MRP `
80A	DHMJCSPF080	1,550/-	DHMJCDFP080	3,390/-
100A	DHMJCSPF100	1,750/-	DHMJCDFP100	3,510/-
125A	DHMJCSPF125	1,925/-	DHMJCDFP125	4,010/-
Rating	TP Cat. No.	MRP `	FP Cat. No.	MRP `
80A	DHMJCCTPF080	4,950/-	DHMJCFFP080	6,175/-
100A	DHMJCCTPF100	5,250/-	DHMJCFFP100	6,800/-
125A	DHMJCCTPF125	5,910/-	DHMJCFFP125	7,220/-

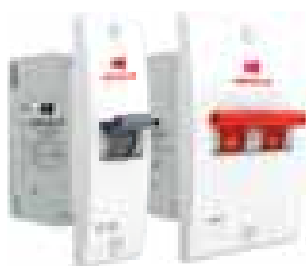
Time Switch



Time Switch

Description	Cat. No.	MRP `
Digital Weekly Programmable Time Switch	DHTAW01016	2,080/-
Astronomical Weekly Programmable Time Switch	DHTBW01006	2,400/-
Staircase Light Time Switch (0.5-20 Min)	DHTCNX5016	1,110/-
Programmable Time Switch 24 Hrs	DHTDD15016	2,225/-

Mini MCB



Mini MCB

'C' Series (In accordance with IS/IEC 60898-1) 240/415V, 50Hz, 3kA

Rating	SP Cat. No.	MRP `	DP Cat. No.	MRP `
6A-32A	DHMNCSPA006-032	160/-	DHMNCSPA006-032	350/-

Mini DP Isolator

'C' Series (In accordance with IS/IEC 60898-1) 240/415V, 50Hz, 3kA

Rating	DP Cat. No.	MRP `
40A	DHMNIDPX040	320/-

'DC' Series MCB



'DC' Series MCB

For DC Supply, upto 220V

Rating	SP Cat. No.	MRP `	DP Cat. No.	MRP `
0.5-5A	DHMCESPF0x50013 - 0050013	345/-	DHMCEDPF0x50013 - 0050013	810/-
6-32A	DHMCESPF0060013 - 0320013	330/-	DHMCEDPF0060013 - 0350013	650/-
40A	DHMCESPF0400013	445/-	DHMCEDPF0400013	935/-
50A	DHMCESPF0500013	525/-	DHMCEDPF0500013	1,040/-
63A	DHMCESPF0630013	525/-	DHMCEDPF0630013	1,040/-

'DC' Series MCB

For Railway Applications (with extended terminals & mounting brackets)

Rating	SP Cat. No.	MRP `
0.5-5A	DHMCRSPF0x50013 - 0050013	390/-
6-35A	DHMCRSPF0060013 - 0350013	375/-
40A	DHMCRSPF0400013	505/-
50A	DHMCRSPF0500013	545/-
60A	DHMCRSPF0600013	545/-

Suitable for Railway application as per RDSO, Drg. SKEL. 3700 alt-1 and specification No. SPEC/E-12/1/04 (with extended terminals and mounting brackets)

MCB Isolator



MCB ISOLATOR (Switching Devices)

MCB Isolators (AC-22A, In accordance with IS/IEC 60947-3) 240/415, 50Hz

Rating	SP Cat. No.	MRP `	DP Cat. No.	MRP `
40A	DHMIOSPX040	265/-	DHMIODPX040	380/-
63A	DHMIOSPX063	310/-	DHMIODPX063	485/-
80A	-	-	DHMIODPX080	635/-
100A	-	-	DHMIODPX100	635/-
125A	-	-	DHMIODPX125	695/-
Rating	TP Cat. No.	MRP `	FP Cat. No.	MRP `
40A	DHMIOTPX040	745/-	DHMIOFPX040	875/-
63A	DHMIOTPX063	845/-	DHMIOFPX063	890/-
80A	DHMIOTPX080	995/-	DHMIOFPX080	1,145/-
100A	DHMIOTPX100	995/-	DHMIOFPX100	1,145/-
125A	DHMIOTPX125	1,035/-	DHMIOFPX125	1,230/-

MCB Changeover



Two Way Centre Off Changeover Switch

For Dual Electricity Supply Management (In accordance with IS/IEC 60947-3)

Rating	DP Cat. No.	MRP `	FP Cat. No.	MRP `
25A	DHMCODPE025	1,160/-	DHMCODPE025	2,040/-
40A	DHMCODPE040	1,670/-	DHMCODPE040	3,100/-
63A	DHMCODPE063	2,000/-	DHMCODPE063	3,750/-

RCCB - 'AC' Type



RCCB - 'AC' Type

(In accordance with IS 12640-1 & IEC 61008-1) 240/415, 50Hz with 6kA short circuit withstand capacity

Rating (DP)	30mA Cat. No.	MRP `	100mA Cat. No.	MRP `	300mA Cat. No.	MRP `
16A	DHRMCTDE030016	2,500/-	DHRMCTDE100016	2,440/-	DHRMCTDE300016	2,440/-
25A	DHRMCTDE030025	2,500/-	DHRMCTDE100025	2,440/-	DHRMCTDE300025	2,440/-
32A	DHRMCTDE030032	2,520/-	DHRMCTDE100032	2,520/-	DHRMCTDE300032	2,520/-
40A	DHRMCTDE030040	2,520/-	DHRMCTDE100040	2,520/-	DHRMCTDE300040	2,520/-
63A	DHRMCTDE030063	3,300/-	DHRMCTDE100063	3,300/-	DHRMCTDE300063	3,300/-
Rating (FP)	30mA Cat. No.	MRP `	100mA Cat. No.	MRP `	300mA Cat. No.	MRP `
25A	DHRMCRFE030025	3,200/-	DHRMCRFE100025	3,100/-	DHRMCRFE300025	3,100/-
40A	DHRMCRFE030040	3,220/-	DHRMCRFE100040	3,150/-	DHRMCRFE300040	3,150/-
63A	DHRMCRFE030063	3,400/-	DHRMCRFE100063	3,400/-	DHRMCRFE300063	3,400/-

Higher Rating RCCB



Higher Rating RCCB (80-100A) DP

(In accordance with IS 12640-1 & IEC 61008-1) 240/415, 50Hz with 10kA short circuit withstand capacity

Rating (DP)	30mA Cat. No.	MRP `	100mA Cat. No.	MRP `	300mA Cat. No.	MRP `
80A	DHRMCMDF030080	4,780/-	DHRMCMDF100080	4,780/-	DHRMCMDF300080	4,780/-
100A	DHRMCMDF030100	4,850/-	DHRMCMDF100100	4,850/-	DHRMCMDF300100	4,850/-
Rating (FP)	30mA Cat. No.	MRP `	100mA Cat. No.	MRP `	300mA Cat. No.	MRP `
80A	DHRMCMFF030080	5,150/-	DHRMCMFF100080	5,150/-	DHRMCMFF300080	5,150/-
100A	DHRMCMFF030100	5,285/-	DHRMCMFF100100	5,285/-	DHRMCMFF300100	5,285/-

RCCB - 'A' Type

(In accordance with IS 12640-1 & IEC 61008-1) 240/415, 50Hz with 6kA short circuit withstand capacity



Rating (DP)	30mA Cat. No.	MRP `	100mA Cat. No.	MRP `	300mA Cat. No.	MRP `
16A	DHRMAMDF030016	2,900/-	DHRMAMDF100016	2,800/-	DHRMAMDF300016	2,800/-
25A	DHRMAMDF030025	2,900/-	DHRMAMDF100025	2,800/-	DHRMAMDF300025	2,800/-
32A	DHRMAMDF030032	3,050/-	DHRMAMDF100032	2,980/-	DHRMAMDF300032	2,980/-
40A	DHRMAMDF030040	3,050/-	DHRMAMDF100040	2,980/-	DHRMAMDF300040	2,980/-
63A	DHRMAMDF030063	3,665/-	DHRMAMDF100063	3,550/-	DHRMAMDF300063	3,550/-
Rating (FP)	30mA Cat. No.	MRP `	100mA Cat. No.	MRP `	300mA Cat. No.	MRP `
16A	DHRMAMFF030016	3,545/-	DHRMAMFF100016	3,440/-	DHRMAMFF300016	3,440/-
25A	DHRMAMFF030025	3,550/-	DHRMAMFF100025	3,440/-	DHRMAMFF300025	3,440/-
32A	DHRMAMFF030032	3,495/-	DHRMAMFF100032	3,380/-	DHRMAMFF300032	3,380/-
40A	DHRMAMFF030040	3,495/-	DHRMAMFF100040	3,380/-	DHRMAMFF300040	3,380/-
63A	DHRMAMFF030063	3,725/-	DHRMAMFF100063	3,660/-	DHRMAMFF300063	3,660/-

RCBO - A Type



RCBO - A Type (SPN - 2M)

(In accordance with IS 12640-2 & IEC 61009-1) 240/415V, 50Hz, with 10 kA short circuit capacity

Rating (SPN)	30mA Cat. No.	MRP `	100mA Cat. No.	MRP `	300mA Cat. No.	MRP `
6A	DHCEACSN2030006	3,000/-	DHCEACSN2100006	3,000/-	DHCEACSN2300006	3,000/-
10A	DHCEACSN2030010	3,000/-	DHCEACSN2100010	3,000/-	DHCEACSN2300010	3,000/-
16A	DHCEACSN2030016	3,000/-	DHCEACSN2100016	3,000/-	DHCEACSN2300016	3,000/-
20A	DHCEACSN2030020	3,000/-	DHCEACSN2100020	3,000/-	DHCEACSN2300020	3,000/-
25A	DHCEACSN2030025	3,000/-	DHCEACSN2100025	3,000/-	DHCEACSN2300025	3,000/-
32A	DHCEACSN2030032	3,000/-	DHCEACSN2100032	3,000/-	DHCEACSN2300032	3,000/-
40A	DHCEACSN2030040	3,700/-	DHCEACSN2100040	3,700/-	DHCEACSN2300040	3,700/-

RCBO - A Type (TPN - 4M)

(In accordance with IS 12640-2 & IEC 61009-1) 240/415V, 50Hz, with 10 kA short circuit capacity



Rating (TPN)	30mA Cat. No.	MRP `	100mA Cat. No.	MRP `	300mA Cat. No.	MRP `
6A	DHCEACTN4030006	3,850/-	DHCEACTN4100006	3,850/-	DHCEACTN4300006	3,850/-
10A	DHCEACTN4030010	3,850/-	DHCEACTN4100010	3,850/-	DHCEACTN4300010	3,850/-
16A	DHCEACTN4030016	3,850/-	DHCEACTN4100016	3,850/-	DHCEACTN4300016	3,850/-
20A	DHCEACTN4030020	3,850/-	DHCEACTN4100020	3,850/-	DHCEACTN4300020	3,850/-
25A	DHCEACTN4030025	3,850/-	DHCEACTN4100025	3,850/-	DHCEACTN4300025	3,850/-
32A	DHCEACTN4030032	3,850/-	DHCEACTN4100032	3,850/-	DHCEACTN4300032	3,850/-
40A	DHCEACTN4030040	4,100/-	DHCEACTN4100040	4,100/-	DHCEACTN4300040	4,100/-

ACCL

TPN ACCL (TPN/SPN) (Automatic Source Changeover with Current Limiter)

Gen Rating	Description	Cat. No.	MRP `	Cat. No. with GEN Start/Stop	MRP `
20A	40A/20A TPN/SPN ACCL	DHACOTN4020	9,250/-	DHACWTN4020	9,500/-
25A	40A/25A TPN/SPN ACCL	DHACOTN4025	9,250/-	DHACWTN4025	9,500/-
30A	40A/30A TPN/SPN ACCL	DHACOTN4030	9,250/-	DHACWTN4030	9,500/-
40A	40A/40A TPN/SPN ACCL	DHACOTN4040	9,250/-	DHACWTN4040	9,500/-
20A	63A/20A TPN/SPN ACCL	DHACOTN6320	11,500/-	DHACWTN6320	11,750/-
25A	63A/25A TPN/SPN ACCL	DHACOTN6325	11,500/-	DHACWTN6325	11,750/-
30A	63A/30A TPN/SPN ACCL	DHACOTN6330	11,500/-	DHACWTN6330	11,750/-
40A	63A/40A TPN/SPN ACCL	DHACOTN6340	11,500/-	DHACWTN6340	11,750/-
63A	80A/63A TPN/SPN ACCL	DHACOTN8063	25,000/-	-	-
80A	80A/80A TPN/SPN ACCL	DHACOTN8080	25,000/-	-	-
95A	95A/95A TPN/SPN ACCL	DHACOTN9595	25,000/-	-	-



TPN ACCL (TPN/TPN) (Automatic Source Changeover with Current Limiter)

Gen Rating	Description	Cat. No.	MRP `	Cat. No. with GEN Start/Stop	MRP `
20A	40A/20A TPN/TPN ACCL	DHACOTT4020	9,750/-	DHACWTT4020	10,000/-
25A	40A/25A TPN/TPN ACCL	DHACOTT4025	9,750/-	DHACWTT4025	10,000/-
30A	40A/30A TPN/TPN ACCL	DHACOTT4030	9,750/-	DHACWTT4030	10,000/-
40A	40A/40A TPN/TPN ACCL	DHACOTT4040	9,750/-	DHACWTT4040	10,000/-
20A	63A/20A TPN/TPN ACCL	DHACOTT6320	11,750/-	DHACWTT6320	12,000/-
25A	63A/25A TPN/TPN ACCL	DHACOTT6325	11,750/-	DHACWTT6325	12,000/-
30A	63A/30A TPN/TPN ACCL	DHACOTT6330	11,750/-	DHACWTT6330	12,000/-
40A	63A/40A TPN/TPN ACCL	DHACOTT6340	11,750/-	DHACWTT6340	12,000/-
63A	80A/63A TPN/TPN ACCL	DHACOTT8063	26,000/-	-	-
80A	80A/80A TPN/TPN ACCL	DHACOTT8080	26,000/-	-	-
95A	95A/95A TPN/TPN ACCL	DHACOTT9595	26,000/-	-	-



SPN ACCL (Automatic Source Changeover with Current Limiter)

Gen Rating	Description	Cat. No. w/o GEN Start/Stop	MRP `	Cat. No. with GEN Start/Stop	MRP `
SPN 1.5 (300W)	30A/1.5A ACCL	DHACOSN301X	1,995/-	-	-
SPN 2.5 (500W)	30A/2.5A ACCL	DHACOSN302X	1,995/-	-	-
SPN 3 (600W)	30A/03A ACCL	DHACOSN3003	1,995/-	DHACWSN3003	2,195/-
SPN 4 (800W)	30A/4A ACCL	DHACOSN3004	1,995/-	-	-
SPN 5 (1000W)	30A/5A ACCL	DHACOSN3005	1,995/-	-	-
SPN 6 (1200W)	30A/06A ACCL	DHACOSN3006	1,995/-	DHACWSN3006	2,195/-
SPN 9 (1800W)	30A/09A ACCL	DHACOSN3009	1,995/-	DHACWSN3009	2,195/-
SPN 12 (2400W)	30A/12A ACCL	DHACOSN3012	1,995/-	DHACWSN3012	2,195/-
SPN 15 (3000W)	30A/15A ACCL	DHACOSN3015	1,995/-	DHACWSN3015	2,195/-
SPN 20 (4000W)	30A/20A ACCL	DHACOSN3020	1,995/-	DHACWSN3020	2,195/-

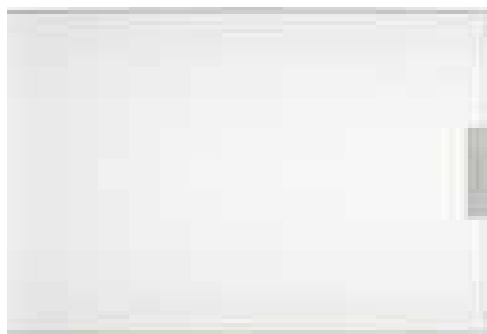


Automatic Changeover

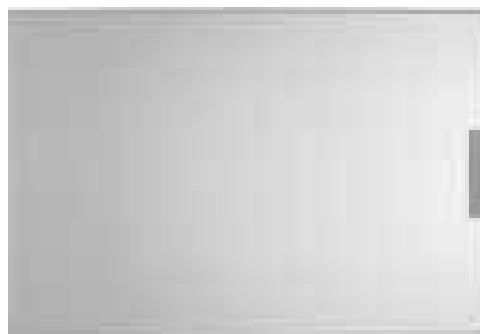
Gen Rating	Description	Cat. No. w/o GEN Start/Stop	MRP `	Cat. No. with GEN Start/Stop	MRP `
SPN 30 (6000 W)	SPN 30 (6000 W)	DHAAOSN3030	1,600/-	DHAAWSN3030	1,800/-

Metalica DB

METALICA
Distribution Boards



Sparkling White



Silverish Grey



SPN Metalica Distribution Board

No. of Ways	Sparkling White SPN Cat. No.	Silverish Grey SPN Cat. No.	MRP `
4	DHDNSHODAW04	DHDNSHODDW04	1,265/-
6	DHDNSHODAW06	DHDNSHODDW06	1,430/-
8	DHDNSHODAW08	DHDNSHODDW08	1,630/-
12	DHDNSHODAW12	DHDNSHODDW12	1,970/-
16	DHDNSHODAW16	DHDNSHODDW16	2,575/-



TPN Metalica Distribution Board

No. of Ways	Sparkling White TPN Cat. No.	Silverish Grey TPN Cat. No.	MRP `
4	DHDNTHODAW04	DHDNTHODDW04	3,190/-
6	DHDNTHODAW06	DHDNTHODDW06	4,010/-
8	DHDNTHODAW08	DHDNTHODDW08	5,240/-
12	DHDNTHODAW12	DHDNTHODDW12	7,730/-

Designer DB



DBOXx SPN & TPN

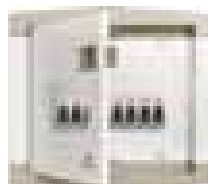
The New Style Statement for your DBs

No. of Ways	SPN Cat. No.	MRP `	No. of Ways	TPN Cat. No.	MRP `
8	DHDPSHSDPC08	1,465/-	4/6	DHDPTHODPC06	3,675/-
12	DHDPSHSDPC12	1,900/-	8	DHDPTHODPC08	4,655/-
16	DHDPSHSDPC16	2,440/-	12	DHDPTHODPC12	6,710/-



Translucent Designer Distribution Boards

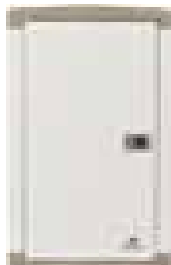
No. of Ways	Cat. No. Single Phase (DD)	MRP `
4	DHDPSHODRC04	1,230/-
8	DHDPSHODRC08	1,620/-
12	DHDPSHODRC12	2,175/-
16	DHDPSHODRC16	2,690/-



Transparent

No. of Ways	Cat. No. Single Phase (DD)	MRP `	No. of Ways	Cat. No. Three Phase (DD)	MRP `
4	DHDPSHODRT04	1,435/-	4	DHDNTHODRT04	4,350/-
8	DHDPSHODRT08	1,890/-	8	DHDNTHODRT08	6,310/-
12	DHDPSHODRT12	2,645/-	12	-	-
16	DHDPSHODRT16	3,185/-	16	-	-

QVE Series DB



SP&N

No. of Ways	O/G	Regal Grey Cat. No. (SD)	MRP `	Regal Grey Cat. No. (DD)	Pearl Ivory Cat. No. (DD)	MRP `
4	4	DHDPHOSRW04	710/-	DHDPHODRW04	DHDPHODPW04	1,100/-
6	6	DHDPHOSRW06	790/-	DHDPHODRW06	DHDPHODPW06	1,280/-
8	8	DHDPHOSRW08	850/-	DHDPHODRW08	DHDPHODPW08	1,420/-
12	12	DHDPHOSRW12	1,150/-	DHDPHODRW12	DHDPHODPW12	1,730/-
16	16	DHDPHOSRW16	1,430/-	DHDPHODRW16	DHDPHODPW16	2,300/-

TP&N (for Single Phase Outgoing)

No. of Ways	I/C+O/G	Regal Grey Cat. No. (SD)	MRP `	Regal Grey Cat. No. (DD)	Pearl Ivory Cat. No. (DD)	MRP `
4	4+12	DHDPHOSRW04	2,140/-	DHDPHODRW04	DHDPHODPW04	2,850/-
6	8+18	DHDPHOSRW06	2,600/-	DHDPHODRW06	DHDPHODPW06	3,550/-
8	8+24	DHDPHOSRW08	3,000/-	DHDPHODRW08	DHDPHODPW08	4,560/-
12	8+36	DHDPHOSRW12	3,900/-	DHDPHODRW12	DHDPHODPW12	6,730/-

Consumer Units



Single Door with Acrylic Window

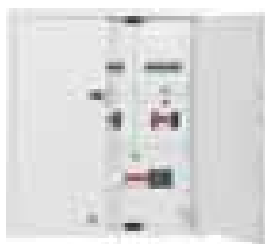
Sheet Steel, Phosphatised, Powder Painted MCB DBs with Bus Bar, Neutral Link, Earth Bar and Din Rail (In accordance with IS 13032, IS 8623, IEC/BSEN 60439-3)

No. of Ways	Regal Grey Cat. No.	MRP `
4	DHDMHOSRA04	850/-
8	DHDMHOSRA08	1,050/-
12	DHDMHOSRA12	1,350/-
16	DHDMHOSRA16	1,690/-

Single Door Consumer unit without MCB & Isolator

No. of Ways	Regal Grey Cat. No.	MRP `
2+4	DHDCSHOSRW04	880/-
2+8	DHDCSHOSRW08	1,180/-
2+12	DHDCSHOSRW12	1,420/-

7 Segment



7 Segment

No. of Ways	Regal Grey Cat. No. (DD).	MRP `
4	DHDMTHDDR04	6,200/-
6	DHDMTHDDR06	7,400/-
8	DHDMTHDDR08	9,800/-
12	DHDMTHDDR12	10,900/-

TP&N Vertical



TP&N Vertical

No. of Ways	I/C+O/G	Single Door	MRP `	Double Door	MRP `
4	8+12	DHDMTVOSRW04	5,000/-	DHDMTVODRW04	7,200/-
8	8+24	DHDMTVOSRW08	7,000/-	DHDMTVODRW08	8,990/-
12	8+36	DHDMTVOSRW12	8,990/-	DHDMTVODRW12	11,900/-

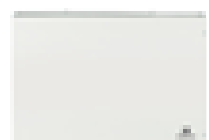


TP&N Vertical Loadline

Loadline DBs are fitted with Bus Bars, Neutral Links, Blanking Plates (without MCCB)

No. of Ways	Cat. No.	Description	MRP `
SINGLE DOOR		SUITABLE FOR TP 'G FRAME' MCCB	
4	DHDLVSRWGOFO04	DB LL 4W SD VERT W/O MCCB	6,100/-
8	DHDLVSRWGOFO08	DB LL 8W SD VERT W/O MCCB	7,800/-
12	DHDLVSRWGOFO12	DB LL 12W SD VERT W/O MCCB	9,500/-
DOUBLE DOOR		SUITABLE FOR TP 'G FRAME' MCCB	
4	DHDLVDRWGOFO04	DB LL 4W DD VERT W/O MCCB	7,700/-
8	DHDLVDRWGOFO08	DB LL 8W DD VERT W/O MCCB	8,900/-
12	DHDLVDRWGOFO12	DB LL 12W DD VERT W/O MCCB	10,500/-
DOUBLE DOOR		SUITABLE FOR TP/FP 'A FRAME' MCCB	
4	DHDLVDRWAOF004	DB LL 4W DD VERT W/O MCCB	8,900/-
8	DHDLVDRWAOF008	DB LL 8W DD VERT W/O MCCB	11,600/-
12	DHDLVDRWAOF012	DB LL 12W DD VERT W/O MCCB	15,000/-

Note: (i) MCCBs & Accessories Should Be Selected And Purchased Separately
 (ii) For Any Other Configuration Contact Us
 (iii) For Appropriate MCCB Price, Please see Havells IP Price List



SP&N (IP 54)

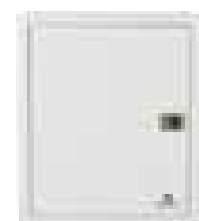
No. of Ways	Description	Horizontal Cat. No.	MRP `
4	SPN DB DD 04W	DHDMSHODRW040002	4,600/-
8	SPN DB DD 08W	DHDMSHODRW080002	5,300/-
12	SPN DB DD 12W	DHDMSHODRW120002	6,300/-



TP&N (IP 54)

No. of Ways	Description	Horizontal Cat. No.	MRP `	Vertical Cat. No.	MRP `
4	TPN DB DD 04W	DHDMTHODRW040002	7,300/-	DHDMTVODR040002	12,200/-
8	TPN DB DD 08W	DHDMTHODRW080002	9,600/-	DHDMTVODR080002	18,800/-
12	TPN DB DD 12W	DHDMTHODRW120002	13,300/-	DHDMTVODR120002	22,000/-

Prewired



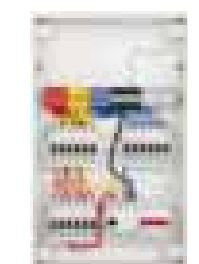
SP&N Prewired
(with cable end box)

No. of Ways	IC/OG	DD Cat. No.	MRP `*`
6	2+6	DHDMSHMLRW06	3,700/-
8	2+8	DHDMSHMLRW08	4,310/-
10	2+10	DHDMSHMLRW10	5,460/-
12	2+12	DHDMSHMLRW12	6,420/-
16	2+16	DHDMSHMLRW16	7,270/-



TP&N Prewired
(without cable end box)

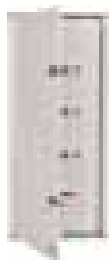
No. of Ways	IC/OG	DD Cat. No.	MRP `*`
4	8+12	DHDMTHMKDRA04	7,635/-
6	8+18	DHDMTHMKDRA06	9,200/-
8	8+24	DHDMTHMKDRA08	10,580/-
12	8+36	DHDMTHMKDRA12	12,785/-



TP&N Prewired
(with cable end box)

No. of Ways	IC/OG	DD Cat. No.	MRP `*`
4	8+12	DHDMTHMLXW04	7,925/-
6	8+18	DHDMTHMLXW06	9,500/-
8	8+24	DHDMTHMLXW08	10,985/-
12	8+36	DHDMTHMLXW12	12,785/-

Per Phase Isolation



Per Phase Isolation (PPI) Vertical - 4 Tier

No. of Ways	I/C + O/G	Regal Grey Cat. No. (DD).	MRP `
2+8	4+6+24	DHDPTVPDRW08	8,000/-
2+12	4+6+36	DHDPTVPDRW12	9,900/-



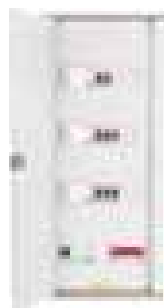
Per Phase Isolation (PPI) Horizontal- QVE Series

No. of Ways	I/C + O/G	Regal Grey Cat. No. (DD)	MRP `
2+4	4+6+12	DHDPTHPRW04	4,200/-
2+6	4+6+18	DHDPTHPRW06	5,300/-
2+8	4+6+24	DHDPTHPRW08	7,000/-

Phase Selector

Phase Selector Enclosure (Vertical)
(with rotary switches, duly wired)

Rating	Regal Grey Cat. No.	MRP `
40A	DHDATVFS40	2,900/-
63A	DHDATVFS63	4,200/-



Automatic Phase Selector DB

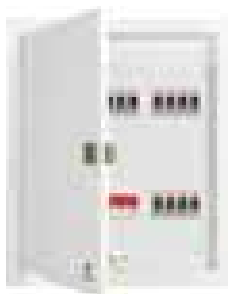
No. of Ways	Cat. No.	Description	MRP `
4	DHDANVDRZ04032	Auto Ph-Sel DB 4W D/D 32A	11,400/-
6	DHDANVDRZ06032	Auto Ph-Sel DB 6W D/D 32A	13,400/-

Phase Selector (Horizontal - 4 Quadrant)
(with rotary switches, duly wired)

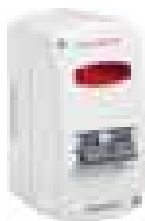
No. of Ways	Rating	Regal Grey Cat. No. (DD)	I/C	MRP `
4	40A	DHDSCHDRZ04040	Eight way	6,500/-
4	63A	DHDSCHDRZ04063	Eight way	8,700/-
6	40A	DHDSCHDRZ06040	Eight way	7,200/-
6	63A	DHDSCHDRZ06063	Eight way	9,000/-
8	40A	DHDSCHDRZ08040	Eight way	7,600/-
8	63A	DHDSCHDRZ08063	Eight way	9,800/-

Phase Selector (Vertical)
(with rotary switches, duly wired & provision for 8W I/C)

No. of Ways	Rating	Regal Grey Cat. No. (DD)	MRP `
4	40A	DHDSNVDRZ04040	8,300/-
4	63A	DHDSNVDRZ04063	9,800/-
6	40A	DHDSNVDRZ06040	8,400/-
6	63A	DHDSNVDRZ06063	9,900/-
8	40A	DHDSNVDRZ08040	9,300/-
8	63A	DHDSNVDRZ08063	10,400/-



Home Safe



(Mini DP MCB with Enclosure)

Description	DP Cat. No.	MRP `
DP C 06-32A mini MCB with enclosure	DHMPCDPA006-32	430/-

DBoxx Combo



DBoxx MCB Protected Socket

Rating	Cat. No.	Description	MRP `
(With Sheet Steel Enclosure)			
16A	DHDMCSN0251016	16A MCB DBOXX COMBO	680/-
20A	DHDMCSN0251020	20A MCB DBOXX COMBO	680/-
25A	DHDMCSN0251025	25A MCB DBOXX COMBO	680/-
16A	DHDMCDP0253016	16A MCB DBOXX COMBO DP	880/-
20A	DHDMCDP0253020	20A MCB DBOXX COMBO DP	880/-
25A	DHDMCDP0253025	25A MCB DBOXX COMBO DP	880/-
With Plastic Enclosure (for surface mounting)			
16A	DHDTCSN0251016	16A MCB DBOXX COMBO Plastic	680/-
20A	DHDTCSN0251020	20A MCB DBOXX COMBO Plastic	680/-
25A	DHDTCSN0251025	25A MCB DBOXX COMBO Plastic	680/-
Without Enclosure			
16A	DHDWCSN0251016	16A MCB DBOXX COMBO W/O ENCL.	620/-
20A	DHDWCSN0251020	20A MCB DBOXX COMBO W/O ENCL.	620/-
25A	DHDWCSN0251025	25A MCB DBOXX COMBO W/O ENCL.	620/-
16A	DHDWCM30251016	16A MCB DBOXX COMBO 3M W/O ENCL.	590/-
20A	DHDWCM30251020	20A MCB DBOXX COMBO 3M W/O ENCL.	590/-
25A	DHDWCM30251025	25A MCB DBOXX COMBO 3M W/O ENCL.	590/-

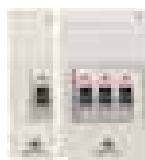
DBoxx MCB Protected Power Unit

Rating	Description	Cat. No.	MRP `
16-25A	16A-25A MCB Protected Power Unit	DHDUCDP0253016-25	1200/-

DBoxx Plug and Socket

Rating	Description	Cat. No.	MRP `
20	Plug & Socket 20A DP With Plastic Cover	DHDCUDP020	810/-
20	Plug & Socket 20A SPN With Plastic Cover	DHDCUSN020	810/-

MCB Enclosure



MCB Enclosure (Cutout)

Sheet Steel, Phosphatised, Powder Painted MCB DBs with Din Rail (In accordance with IS 13032, IS 8623, IEC/BSEN 60439-3)

Plastic			Sheet Steel		
No. of Ways	Cat. No.	MRP `	No. of Ways	Cat. No.	MRP `
2	DHDEPDP	140/-	2	DHDESDP	290/-
4	DHDEFPF	210/-	4	DHDESFP	350/-

Plug & Socket Board



SP&N enclosure with 2 pole and Earth Metal Plug & Socket for incorporating 10A / 20A SPN / DP MCB			TP&N enclosure with 3 pole and Earth Metal Plug & Socket for Incorporating TP MCB		
Amp	Cat. No.	MRP `	Amp	Cat. No.	MRP `
20	DHDPUTN020/DHDPUTN030	850/-	30	DHDPUTN020 / DHDPUTN030	2,410/-

Accessories for DB's Cable End Box (For mounting on top or bottom of Distribution Box for extra wire & cables)

No. of Ways	Item	Cat No. (SD)	MRP (`)	Cat No. (DD)	MRP (`)
4	SP&N	DHDASHOS04	350/-	DHDASHOD04	480/-
8	SP&N	DHDASHOS08	460/-	DHDASHOD08	555/-
12	SP&N	DHDASHOS12	560/-	DHDASHOD12	675/-
16	SP&N	DHDASHOS16	660/-	DHDASHOD16	890/-
4	TP&N - Horizontal	DHDATHOS04	700/-	DHDATHOD04	740/-
6	TP&N - Horizontal	DHDATHOS06	800/-	DHDATHOD06	910/-
8	TP&N - Horizontal	DHDATHOS08	1,000/-	DHDATHOD08	1,100/-
12	TP&N - Horizontal	DHDATHOS12	1,300/-	DHDATHOD12	1,510/-
4/8/12	TP&N - Vertical	DHDATVOS04	1,100/-	DHDATVOD04	1,250/-
4/8/12	Loadline	DHDATVLS04	1,100/-	DHDATVLD04	1,200/-
2+8	PPI	DHDATVTS10	900/-	DHDATVTD10	1,000/-
2+12	PPI	DHDATVTS14	1,100/-	DHDATVTD14	1,200/-

Plastic Channels

Cat. No.	P-Channel Description	Where used in List	MRP (`)
DSCPGMDBX099	SPN 12W Flat Grey	DHDSNVDRZ04040/63 DHDPTVPDRW08	225/-
DSCPGMDBX100	SPN 16W Flat Grey	DHDPTVODRW04/08/12 HDSNVDRZ06040 DHDSNVDRZ06063 DHDSNVDRZ08040/63 DHDPTVPDRW12	250/-
DSCPGMDBX105	SPN 12W Flat Ivory	DHDSNVDPZ04040/63	225/-
DSCPGMDBX106	SPN 16W Flat Ivory	DHDSNVDPZ06040/63 DHDSNVDPZ08040/63	250/-
DSCPGMDBX126	SPN 4W Curve Grey	DHDPSHODRW04	225/-
DSCPGMDBX127	SPN 8W Curve Grey	DHDPSHODRW08 DHDPTHODRW04	250/-
DSCPGMDBX128	SPN 12W Curve Grey	DHDPSHODRW12 DHDPTHODRW06	280/-
DSCPGMDBX129	SPN 16W Curve Grey	DHDPSHODRW16 DHDPTHODRW08	300/-
DSCPGMDBX131	TPN 12W Curve Grey	DHDPTHODRW12	350/-
DSCPGMDBX132	SPN 4W Curve Ivory	DHDPSHODPW04	225/-
DSCPGMDBX133	SPN 8W Curve Ivory	DHDPSHODPW08 DHDPTHODPW04	245/-
DSCPGMDBX134	SPN 12W Curve Ivory	DHDPSHODPW12 DHDPTHODPW06	280/-
DSCPGMDBX135	SPN 16W Curve Ivory	DHDPSHODPW16 DHDPTHODPW08	300/-
DSCPGMDBX137	TPN 12W Curve Ivory	DHDPTHODPW12	350/-

Plug & Sockets

Cat. No.	Description	MRP (`)
DSSPLX0035	20 A DP PLUG ASSEMBLY	280/-
DSSPLX0036	20 A DP SOCKET ASSEMBLY	280/-
DSSPLX0037	30 A TP PLUG ASSEMBLY	600/-
DSSPLX0038	30 A TP SOCKET ASSEMBLY	600/-

Indicator Light (Colour Cap) Indicator Light - Spares

Colour	Cat. No.	MRP `
Red	DCELDMCL001	25/-
Amber	DCELDMCL001	25/-
Blue	DCELDMCL001	25/-
Green	DCELDMCL001	25/-
Clear	DCELDMCL001	25/-

Accessories for MCB's & RCD's

Item Name	Cat. No.	MRP (`)	Item Name	Cat. No.	MRP (`)
Auxiliary Contact	MCBAC116	650/-	Shunt Trip Release	MCDST240	1,650/-

Neutral Link & Earth Link

Neutral Link Cat. No.	Earth Link Cat. No.	Description	MRP (`)
DSCBRCDXB002	-	2W P&S	120/-
DSCBRCDXB011	DSCBRCDXB006	SPN 4W	150/-
DSCBRCDXB090	DSCBRCDXB093	SPN 6W	170/-
DSCBRCDXB012	DSCBRCDXB007	SPN 8W	190/-
DSCBRCDXB013	DSCBRCDXB003	SPN 12W / TPN 4W	210/-
DSCBRCDXB014	DSCBRCDXB004	SPN 16W	240/-
DSCBRCDXB015	DSCBRCDXB005	TPN 6W	280/-
DSCBRCDXB016	DSCBRCDXB009	TPN 8W	320/-
DSCBRCDXB017	DSCBRCDXB008	TPN 12W	340/-

Copper Bus Bar

Cat. No.	Description	MRP (`)
DSCCUPDBP028	BUSBAR SPN 4W	160/-
DSCCUPDBP032	BUSBAR SPN 6W	190/-
DSCCUPDBP029	BUSBAR SPN 8W	210/-
DSCCUPDBP030	BUSBAR SPN 12W	280/-
DSCCUPDBP031	BUSBAR SPN 16W	290/-

Rotary Switch

Cat. No.	Description	MRP (`)
DSCCPAMCX010	40A PHASE-SEL. SWITCH	500/-
DSCCPAMCX009	63A PHASE-SEL. SWITCH	700/-

Miscellaneous

Cat. No.	Description	MRP (`)
DSCPGMDBX019	N/L BASE	60/-
DSCPGMDBX001	Dummy (Blanking) Plate 18mm	20/-
DSCPGMDBX045	KNOB SNAP TYPE GREY	50/-
DSCPGMDBX046	KNOB SNAP TYPE PI	50/-
DSCCPAMCX005	GREEN INDICATOR SWITCH SMALL	60/-

Indicator Light (In accordance with IS/IEC 60947-5-1) 240V~, 50 Hz

Colour	TP Cat. No.	MRP `
Red	DHMCYSPX000	170/-
Amber	DHMCXSPX000	170/-
Blue	DHMCVSPX000	170/-
Green	DHMCZSPX000	170/-
Clear	DHMCWSPX000	170/-

Terms & Conditions: • Prices are in Indian Rupees • All price are on Maximum Retail Price (MRP) basis inclusive of Excise Duty and VAT/Sales Tax as applicable. Freight/Delivery charges if paid by Havells shall be on behalf of customers only • However Discount Structure is exclusive of VAT/Taxes • Goods are dispatched by us on Purchaser's risk. All claims for loss, damage or shortage will be filed by the Purchasers directly with the carriers • Disputes, if any, are subject to Delhi jurisdiction only • **Prices are subject to change without notice** • Company reserves the right to issue amendments, which may arise due to any errors in the price list • Orders will be accepted in multiple of standard packing.

Havells India Ltd.

Corp Office: QRG Towers, 2D, Sector-126, Expressway, Noida-201304 (U.P.), Ph. +91-120-4771000, Email: marketing@havells.com, www.havells.com
Consumer Care No.: 1800 11 0303 (Toll free), 1800 103 1313 (All Connection), 011-4166 0303 (Landline)
Join us on Facebook at www.facebook.com/havells and share your ways to save planet!

